

Committee Introductory Web Meeting Series:

Agriculture Committee
April 7, 2021



The meeting will start soon.

Secretariat : ipam@aaainitiative.org || <http://www.adaptationmetrics.org/>

IPAM Committee Introductory Web Meetings



Guidelines for your participation in this web meeting:

1. You have been automatically muted upon entering the session.
2. We kindly ask you not to unmute yourself until you are given the floor.
3. Videos are all turned off except for the person who is speaking, to save bandwidth. You will be allowed to turn on your video, if you wish, when you are speaking.
4. Please insert your (short) affiliation together with your name ([go to: participants>more>rename](#)).
5. (Brief) Q&As follow each presentation
6. To take part in the discussion, please raise your hand ([go to: participants>more>raise hand](#)).
7. You can also use the chat box to type your questions that will be answered during the final discussion.

Thank you for agreeing to these “rules of the game”



Agriculture Committee Introductory Meeting

Riad BALAGHI

Chair of Agriculture Committee

Director of Projects, the AAA Initiative Foundation

Agriculture Committee: ipamagriculture@aaainitiative.org

Objectives of this meeting

1. Present IPAM vision and structure
2. Present objectives of AMME work program
3. Discuss state of the art on agriculture adaptation indicators and metrics
4. **Develop a strategy for the Agriculture Committee**

Agenda

1. Introduction to IPAM
2. Adaptation Metrics Mapping and Evaluation (AMME)
 - Work Program
3. Metrics for agriculture adaptation: state of the art and study cases
 - FAO: *Selected countries experience on identifying indicators for the national adaptation M&E systems in the Agriculture Sectors*
 - CGIAR: *Measuring adaptation progress across scales and timeframes*
4. IPAM Agriculture Committee
 - Plans and why to join
5. Next Steps
 - Ongoing activities and meetings

Q&As (live discussion)

1. IPAM

Where IPAM comes from ?

- **Origins:**

- 3 conferences on adaptation metrics (2016-2017-2018):

- ✓ The first one organised by the Moroccan COP22 Presidency: resilience, SDGs and sectoral
- ✓ 2017 and 2018 discussed Agriculture, Water and Cities sectors

- 2019 Workshop to create an International Platform on Adaptation Metrics

- ✓ **Objective** : dedicated space to convene and focus expertise on the challenges of adaptation metrics
- ✓ The **challenge** is to find appropriate measurement units that are sufficiently simple, practical, usable and effective and that reflect specifically the progress in adapting to climate change as well as facilitate learning in the context of actionable monitoring and evaluation systems.

- IPAM was launched on **May 22, 2020 by 5 founding institutions**



African Scientific
Research and
Innovation Council



- Website: adaptationmetrics.org

IPAM International Platform
on Adaptation Metrics

www.adaptationmetrics.org

IPAM Today

Period of recruitment, program development and fund-raising:

- Governed by Steering Committee of founding institutions
- **Secretariat is AAA Initiative Foundation**
- Seeking members and sponsorship
- Organizing sectoral / function committees
- Participating in variety of adaptation and resilience initiatives / collaborations
- Developing Work Program (AMME)

After this interim period, IPAM will reconstitute with refined legal and governance framework



MEMBERSHIP OPENING
International Platform on Adaptation Metrics
November 5, 2020 9:00-10:30 UTC and 4:00-5:30 UTC

The Steering Committee of the International Platform on Adaptation Metrics (IPAM) cordially invites you to join us for our membership and activities launch.

Adaptation metrics are essential in order to assess vulnerability, risk, resilience and climate impacts, to track implementation of adaptive responses and to monitor and measure adaptation results. The formulation of standardized adaptation metrics is one of the great trans-disciplinary challenges of our time. Building knowledge and consensus on adaptation metrics is critical for climate adaptation policy and business imperatives at all scales, functions, and sectors, to articulate and meet the goals of the Paris Agreement on climate change and for investment decision-making at scale.

Following a planning workshop of November 2019, formation of a Steering Committee, and consultations throughout this year, we are launching IPAM so as to find common purpose to address these concerns, and invite you to the platform launch so you can learn about our plans and membership options, to seek your feedback on our plans, and to encourage your active participation.

Launch Agenda:

- Welcome and Introducing IPAM: IPAM chair
- Keynote Address: **Secretary General, Intergovernmental Panel on Climate Change (IPCC)**
- Opening word: **Director General of the AAA Initiative Foundation, IPAM's secretariat**
- Introduction to Subcommittees: Water/ Tools & techniques/ Agriculture/ Cities
- Membership Charter, Options and Benefits
- Proposed Adaptation Metrics Mapping and Ex
- Discussion and Wrap-up

IPAM's Current Committees (others to come)

Agriculture



Riad Balaghi

ipamagriculture@aaainitiative.org



Cities



Marta Olazabal

ipamcities@aaainitiative.org



Water



Driss Ouazar

ipamwater@aaainitiative.org



Techniques and Tools



Karl Schultz

ipamtools@aaainitiative.org



2. Adaptation Metrics Mapping and Evaluation (AMME) work program

AMME Work Program

AMME Objectives:

To generate and share knowledge that

- Supports practitioners, funders, policymakers and research community
- Builds on existing and emerging adaptation metrics.

Program Approach:

- Strong “user-need” approach: informs evaluation framework
- *Projects / initiatives* defined / led (mainly) by committees
- Modular framework: *Projects / initiatives* may be broken down to meet specific purposes (e.g. funder/user priorities) within a coherent, harmonized approach.

Proposed AMME phases

Short-medium term

...

Long term

Phase 1: Mapping / Evaluating

- Definitions and frameworks
- User purposes/standards
- Survey and evaluate metrics
- Define tools and techniques required for metrics creation and use

Know the user and the needs landscape

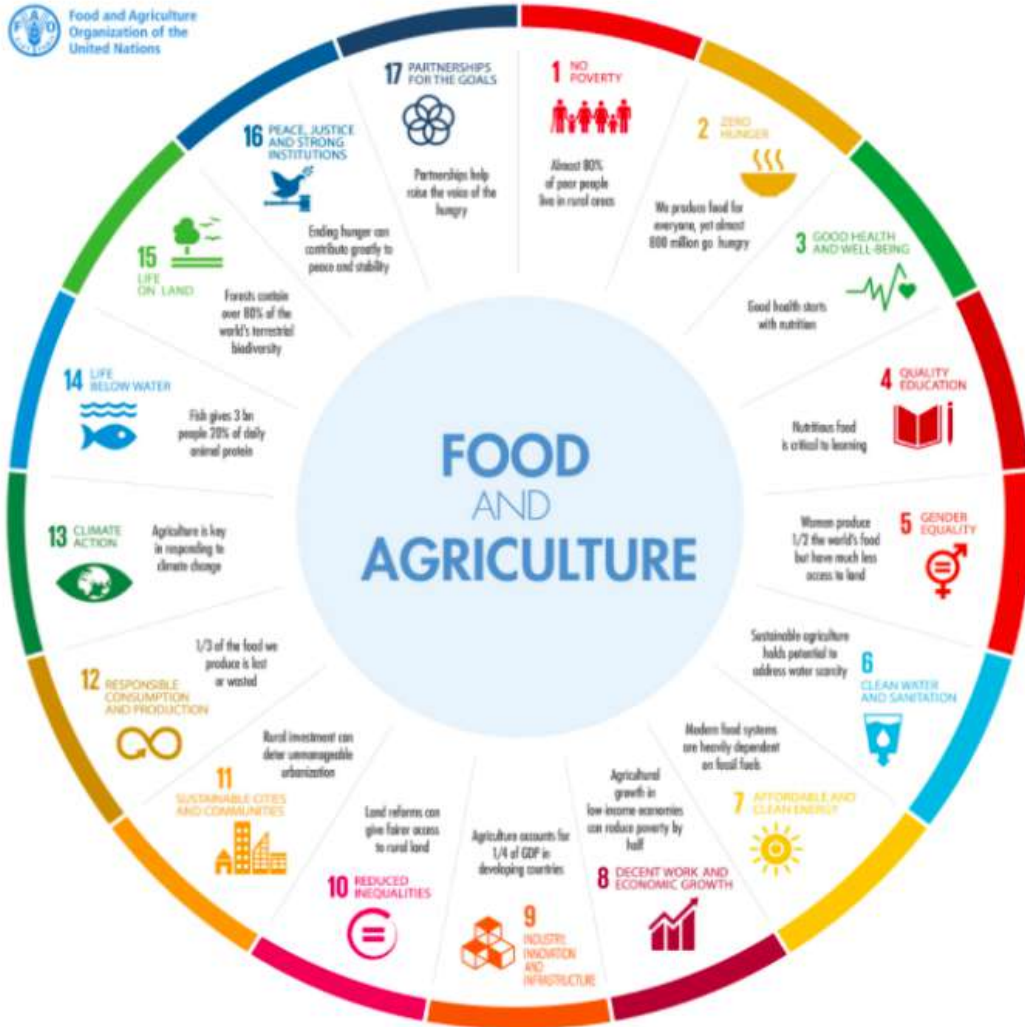
Phase 2 - Creation of an open source platform:

- Geographic database for data collection from ongoing initiatives / projects
- Metrics generation and use from data to modelling
- Capacity building, knowledge and metrics sharing

Strong interactive, sharing approach

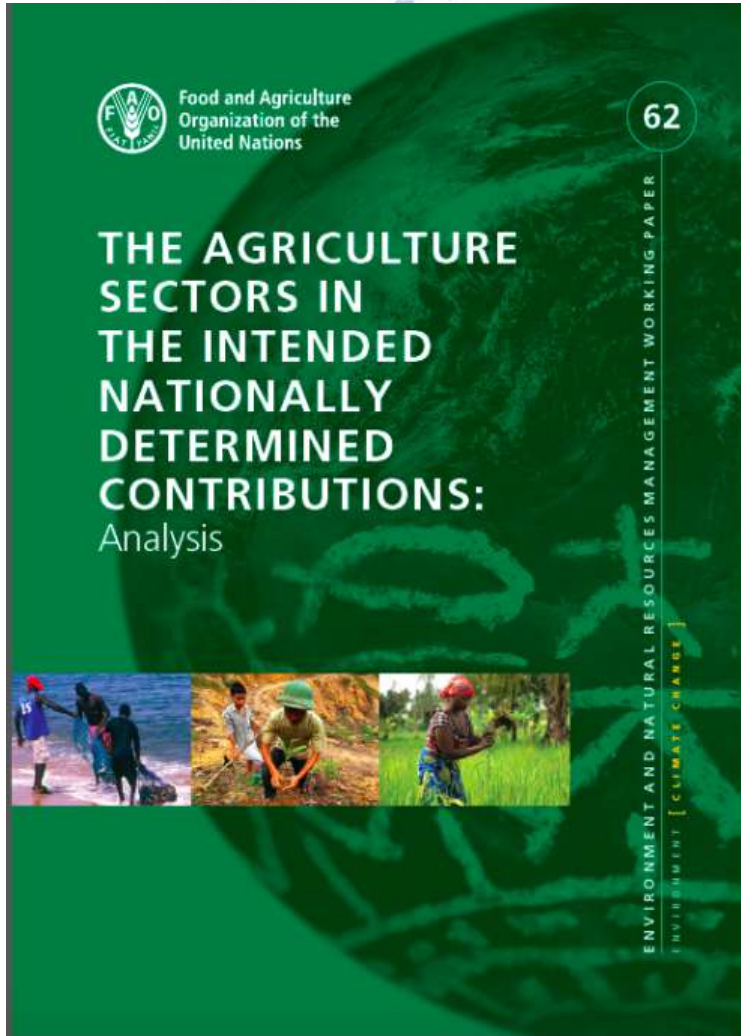
3. Adaptation metrics for Agriculture

Agriculture is at the heart of SDGs



Agriculture is a multidimensional concept including ecosystem and biodiversity management, food security, living environment, social integration, economic development, etc...

Agriculture is a key topic of adaptation to climate change



- According to an FAO analysis (2016), 98 percent of the countries (131 out of 134) that include priority areas for adaptation and/or adaptation actions mention the agriculture sectors.
- There are hundreds of specialized research centers and dedicated think tanks committed to adaptative agriculture around the world.
- The Koronivia Joint Work on Agriculture is a landmark decision recognizing the role of agriculture in tackling climate change. [Decision 4/CP.23](#) requests the [SBSTA](#) and the [SBI](#) to jointly address issues related to agriculture, taking into consideration the vulnerabilities of agriculture to climate change and approaches to addressing food security.

Metrics are needed for M&E systems: How can we standardize agriculture adaptation metrics?

Criteria	Description	Associated articles in the Paris Agreement
1. Aggregable	Does the measure reflect a consistent definition of adaptation that is comparable at the national level, and is available for a comprehensive number of countries globally such that data could be systematically aggregated (qualitatively or quantitatively)?	Article 14 focus on collective progress and Article 7 inclusion of overall progress To some extent Article 7's consideration of adaptation recognition
2. Transparent	Are definitions, assumptions, and methods transparent and consistent between countries?	Article 13 requirement for a transparency framework to inform the global stocktake
3. Longitudinal	Can the measure be tracked over time to monitor and evaluate progress?	Article 7 and 14's focus on progress implies tracking over time
4. Feasible	For global synthesis/aggregation of national assessments submitted to UNFCCC: Does the measure avoid placing undue additional reporting burden on countries? For global tracking of adaptation using publically available data: Is the measure reasonably available or can it be collected for all countries?	Implicit
5. Coherent	Does the measure reflect a concept or construct that is coherent with a general understanding of what constitutes meaningful adaptation? Are assumptions underpinning the use of proxies empirically validated or theoretically sound?	Implicit in the Paris Agreement, particularly Articles 7, 13, and 14
6. Sensitive to national context	Is the measure sensitive to diverse national contexts (for example, different political, economic, and socio-cultural priorities and resources)? Does the measure avoid unjustified, poorly evidenced, or generalized assumptions — implicit or explicit — regarding what is 'good', 'appropriate', or 'sufficient' adaptation?	Implicit but unspecified; degree of desired normativity unresolved

Currently no agreed-upon methods, indicators, metrics or frameworks designed for assessing progress towards the global goal on adaptation.

Adaptation Gap Report 2017 & 2020, UNEP

IPAM International Platform
on Adaptation Metrics

www.adaptationmetrics.org

Monitoring & Evaluation are needed for assessing adaptation progress

Figure ES.2 Assessing the adequacy and effectiveness of adaptation planning worldwide



“At the present time, we cannot assess the adequacy and effectiveness of adaptation planning as there is no consensus around definitions for and approaches to assessing these aspects.”

Effectiveness of adaptation planning :

- comprehensiveness,
- inclusiveness,
- implementability,
- integration,
- monitoring and evaluation**

Adaptation Gap Report 2020, UNEP

Steps toward coherent M&E systems

- 1 CLARIFY PURPOSES OF M&E**
Clarify the key uses and values of M&E data for different stakeholders
- 2 DETERMINE INFORMATION NEEDS**
List stakeholders' priority information needs and indicators in existing M&E systems
- 3 PARTICIPATORY ALIGNMENT**
Work with stakeholder to select indicators that meet priority information needs M&E data for different stakeholders
- 4 DATA SYSTEMS ANALYSIS**
Assess existing data collection and analysis systems for opportunities to build on existing data systems
- 5 PROTOCOL DEVELOPMENT**
Create clear data collection protocols
- 6 INTEGRATED DATA SYSTEM**
Develop integrated systems for flow of information
- 7 CONFIRM ROLES**
Assign roles and responsibilities for data collection and reporting
- 8 CAPACITY NEEDS ASSESSMENT**
Conduct a thorough evaluation of human and institutional capacities
- 9 STRENGTHEN CAPACITY**
Conduct training courses at multiple levels for M&E staff
- 10 NATIONAL FINANCE**
Integrate M&E across sectoral budgets to access national finance and budgets of donor-supported sector-wide approaches

“M&E outputs developed including identifying users and their needs, complementary systems, potential indicators, institutional alignments for implementation, and an assessment of the capacity of implementing partners lay the foundation to create a robust M&E system” (From Climate-Smart Agriculture Investment Plan Development Guide: From Concept to Action, AAA Initiative, 2019)

Figure: GIZ. 2018. Monitoring climate benefits of sustainable land management. Berlin. Adapted from: Rosenstock et al. 2018.

4. Study cases of developed metrics for agricultural systems

Case study 1 - FAO:

Selected countries experience on
identifying indicators for the
national adaptation M&E systems in
the Agriculture Sectors.



*Empowered lives.
Resilient nations.*

Supported by:



based on a decision of the German Bundestag

Selected countries experience on identifying indicators for the national adaptation M&E systems in the Agriculture Sectors

Elisa Distefano

ENRM and Climate Change Adaptation Specialist

FAO, Office of Climate Change, Biodiversity and Environment



April 7th, 2021

Contact: elisa.distefano@fao.org

Colombia: M&E framework for the Integral Management Plan of Climate Change for the Agricultural sector

Indicators on hazards, sensitivity, adaptative capacity for these sectors

Risk and Vulnerability Analysis of the Agricultural Sector in Colombia for 18 representative value chains. Information for each municipality (1122) and generation of 66 indicators

Food Security

Crops

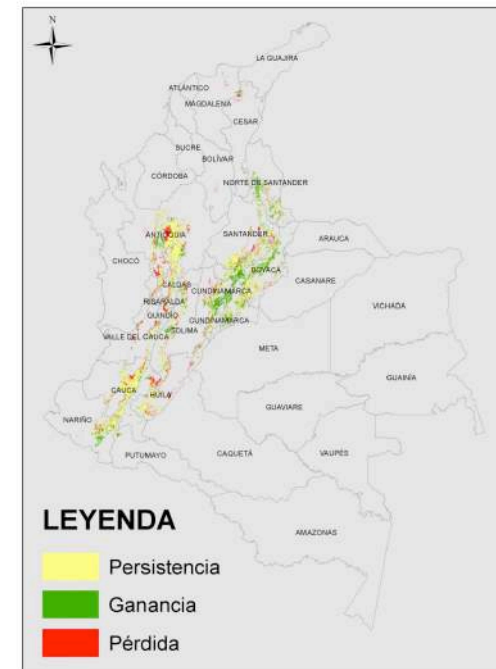
Forestry

Aquaculture and fisheries

Livestock

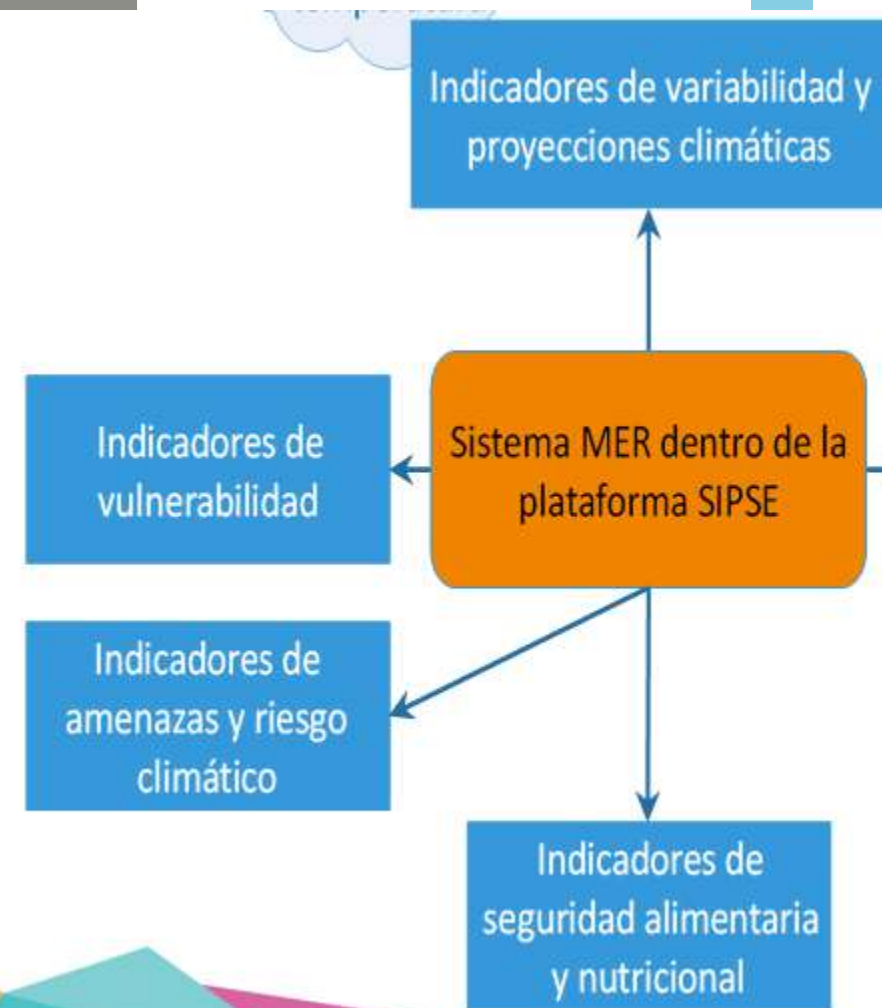
Water

Biodiversity



Guatemala Monitoring, Evaluation and Reporting System for the agriculture, livestock and food security sectors of the PANCC

System	Number of indicators	Example of themes
Climate variability	2	Rainfall
Vulnerability	31	Production of goods and ser Demographics
Risks and threats	12	Deforestation and forest degradation Ecosystem disruption
Food security and nutrition	37	Access to food Food insecurity
Adaptation practices	20	Forestry and agroforestry Irrigation projects



Uruguay M&E system for the NAP for the Agriculture Sector

PNA
AGRO

Plan Nacional de Adaptación a la Variabilidad y el Cambio Climático para el Sector Agropecuario



32 INDICATORS

4 Dimensions



Production
systems



Ecosystems and
natural resources



Rural Livelihoods



Institutional
Capacities



Kenya CSA Strategy and Implementation Framework and the use of existing data sources

Data source	Relevant sector	Description of data
Kenya Meteorological Department	All Agriculture	-Climatic data -Agro-meteorological stations collect data on climate
Kenya Agricultural Research Institute	Agriculture Livestock	-Data on food, horticultural and industrial crops, animal production, animal health, soil fertility, vegetation, agroforestry, and irrigation. *
Department of Resource Surveys & Remote Sensing	Forestry Wildlife Livestock	Data on livestock/wildlife numbers and distribution, vegetation cover, forests, species composition, biofuel, biomass, crops, land degradation, and human settlements.
Water Resources Management Authority	Water	Data on flow volumes at river gauging stations; from hydro meteorological weather stations.
Kenya Forest Service	Forestry	National-level statistics on forestry, forest cover, land use change, timber and fuelwood consumption.
National Environment Management Authority	Water	Data on water quality.
Kenya National Bureau of Statistics	All	Socio-economic data.
Monitoring and Evaluation Directorate	All	Process-based indicators on expenditure on adaptation and related activities.

Uganda Performance M&E framework for NAP for Agriculture



Food and Agriculture Organization
of the United Nations



Federal Ministry for the
Environment, Nature Conservation,
Building and Nuclear Safety



United Nations
Development Programme

Ministry of Agriculture Animal Industry and Fisheries

Performance Monitoring and Evaluation Framework for National
Adaptation Plan for Agriculture (NAP-Ag)

Components and performance dimensions

Component 1: Crop Production

Component 2: Livestock Development

Component 3: Fisheries and Aquaculture

Component 4: Climate Information, Early Warning and
Disaster Preparedness Systems

Component 5: Land Use Land Use change and Forestry
(LULUCF)

Component 6: Research for climate resilient
agricultural development

Component 7: Knowledge Management and
Partnerships for climate action

Component 8: Gendered Approach to climate change
adaptation



Some points for reflection...

Selection of indicators should be performed:

1. Considering what is already tracked in existing systems and by key relevant institutions e.g. Guatemala SIPSE, Colombia SISCLIMA
2. Directly linking into a set of national, sectoral goals and targets (facilitating global reporting of results)
3. Building on a solid theoretical background, e.g. results of the vulnerability and risk assessment
4. The number of indicators varied a lot between countries and there is no one answer as to what is an appropriate or manageable number
5. There can be a gap between what has been designed and what is operationally viable

Thank you!



Case study 2 - CGIAR:

**Measuring adaptation progress across
scales and time frames**

Measuring adaptation progress across scales and time frames



Godefroy Grosjean, G.Grosjean@cgiar.org

Andreea Nowak, A.Nowak@cgiar.org

IPAM Agriculture Committee Meeting

7 April 2021

About us

CGIAR

» **Cutting-edge Research Centers**

» CGIAR global network **combines cutting-edge research, knowledge and assets** that can respond to emerging challenges across the **food-water-energy nexus**.

» **Collaborative Partnerships**

» **Unequaled partnership network** that includes public and private investors, corporates, government bodies, academia, global policy bodies and NGOs.

» **Country Presence**

» Country presence in **+70 countries** with a deep knowledge of customs, values and market operations in developing countries.

» **+8000 Scientists and Researchers**

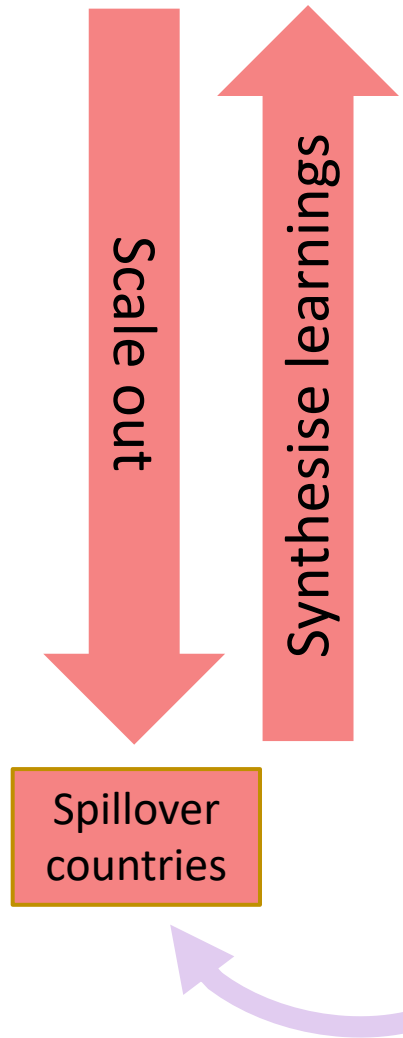
» +8000 scientists and researchers contributing to world class research. CCAFS brings together some of the best researchers globally in **food systems, water, energy, climate, environmental, and social sciences**.

» **Annual Operations and Research Funding**

» **USD 1 billion** in Annual Operations and Research Funding

AICCRA

World Bank & CGIAR project
USD 60 MIO/3 years



Where

Africa-wide



Sub-regions

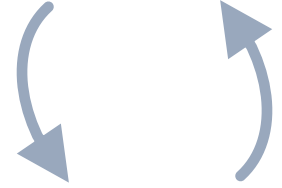


Anchor countries



Who

Thematic leads
Continental partner orgs
CG centres

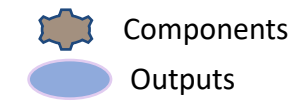
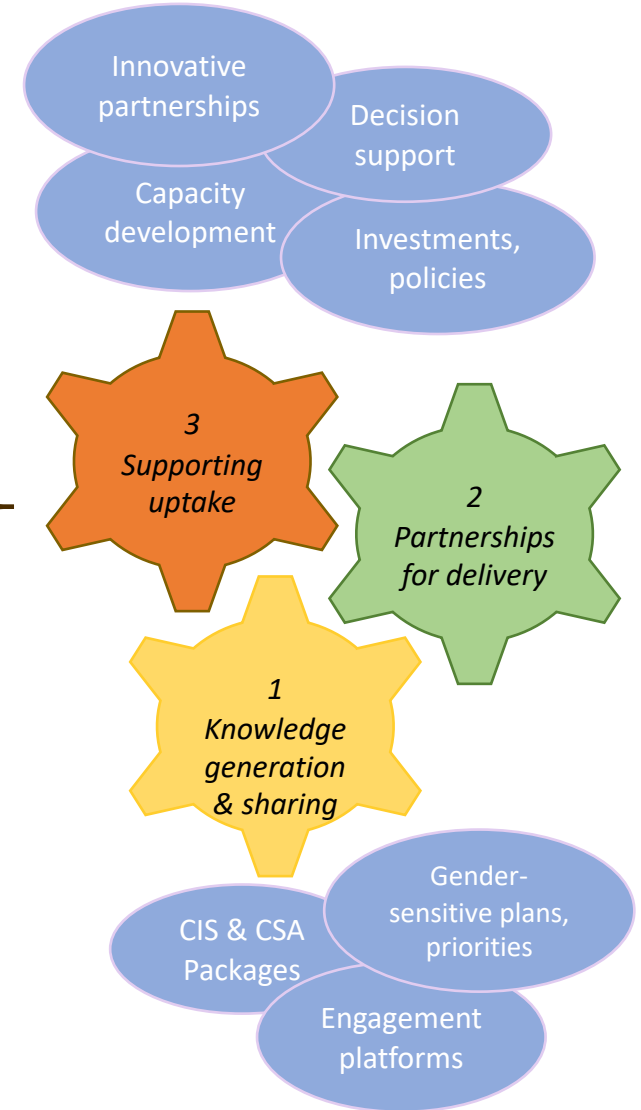


Sub-regional leads
Sub-regional partner orgs



Lead CG centres
Other CG centres
National partner orgs

What



Robust investment planning requires a combination of results-based and outcome-driven approaches to M&E

Design of theories of change and indicator frameworks for short-, medium- and long-term investment planning in climate-smart agriculture in Mali, Cote-d'Ivoire, Jordan, Bangladesh and others.



World Bank and CIAT. 2020. [Climate Smart Agriculture Investment Plans](#). Washington, D.C. : World Bank Group.

Measuring adaptation output, outcome and impacts of for a selected investments (based on Mali CSA Investment Plan)

Timeframe	SHORT	MEDIUM	LONG-TERM
Investment	Outputs (results)	Outcomes	Impacts
Extension systems	Ratio of advisory officer to producers; Frequency of access to CSA information by producers	Improved capacity of advisory officers to deliver relevant, timely information to farmers	Improved coping strategy index (weighted score)
Agroclimatic information systems	Number of weather stations installed and maintained; Number of producers using info services;	Improved effectiveness of services in reducing exposure to climate risks (perceptions)	Improved adaptive capacity index (composite score)
Crop system integration	Number of new varieties on market; Number of users of new varieties	Improved R&D systems for developing climate-smart value chains	Improved farm resilience to food insecurity (Resilience capacity index)
Restoring degraded land	Area (ha) and proportion (%) of degraded land restored	Improved national capacity (extension, research, producers) to restore degraded lands	

Many M&E frameworks and systems are available, and they collect a wealth of data on adaptation

Mapping information needs, available information sources and opportunities to integrate data systems for measuring and reporting (MR) on CSA at national level (Mali, Tanzania, Zambia and Zimbabwe)



Nowak AC, Wilkes A, Rosenstock TS. 2019. [Measurement and reporting of climate-smart agriculture: technical guidance for a country-centric process](#). CCAFS Working Paper No. 274 ICRAF and Unique Forestry and Land Use. 2019. [Climate-Smart Agriculture Measurement, Reporting and Verification in Malawi, Tanzania, Zambia, Zimbabwe](#). Nairobi: ICRAF

In Tanzania, various M&E systems collect information on similar indicators for different reporting purposes (national, regional, international and project level).

Vertically: Indicator/ Horizontally: Source (M&E system), CSA Pillar alignment, Logical Framework (LFA)	ARDS	ASDP II	ASDS II	CSA Guide	AU	CAADP	UNFCCC	SDG	WB	FAO	IFAD	USAID	DFID	CSA Pillar
Agricultural actors adopting CSA practices	■	■	■	■	■	■			■	■	■	■		P, R, M
Land area under CSA	■		■	■					■					P, R, M
Households with ownership/secure land					■			■						R
Household Dietary Diversity Score	■					■				■	■	■		P, R
Performance of practices on CSA pillars									■					P, R, M
Public budget lines for CSA activities				■	■									
Risk reduction actions at local level	■		■					■					■	R
Coping Strategy Index					■	■				■				R
Social Safety Nets (type and beneficiaries)					■	■		■						R
Access to basic services (availability)								■		■				R
ICT tools (availability, use)	■							■						P, R
Diversification strategies		■	■							■				P, R
Extension services & info (availability, use)	■	■	■		■				■		■		■	P, R, M

Review of 50+ NDCs and NAPs in Africa reveals opportunities and gaps for the Global Stocktake

Key questions:

- How are countries tracking their adaptation commitments under the UNFCCC (NDCs, NAPs)? (sectors, levels of ambitions, resilience dimensions, topics)
- How far are countries in the process of setting up adaptation M&E systems? (metrics, quantified targets and timeframes, data sources, institutional roles)
- What are common and unique adaptation indicators across the continent? (best practices, lessons, indicator matrix)

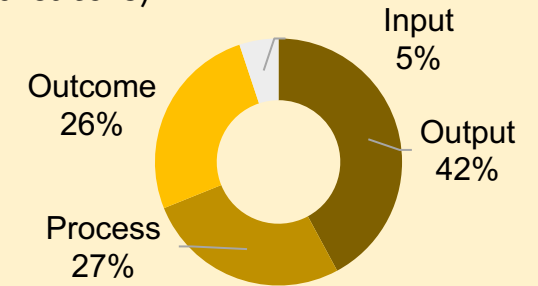
Selection of key findings (work in progress)

Less than 50% of the NDCs & NAPs submitted have adaptation indicators

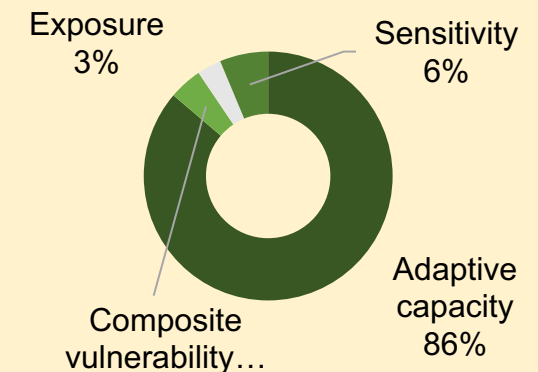


Legend for the map:
■ No NDC/NAP (4)
■ With NDC/NAP, no adaptation action (3)
■ With NDC/NAP, with adaptation actions (31)
■ With NDC/NAP, actions and indicators (20)

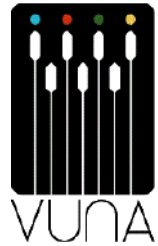
A predominant emphasis on measuring short & medium-term changes (Share of indicators)



High interest in boosting adaptive capacity (Share of indicators)



Thank you!



POLL 1 (multiple choice)

What should be top action tracks for agriculture ?

1. **Assess gaps in terms of adaptation knowledge**, data and metrics, from practitioners to funders ;
2. **Harmonize and inter-connect existing metrics**, from project activities to funders ;
3. **Develop composite metrics** to improve the understanding of adaptation, for comparative assessment across contexts ;
4. **Develop an operational adaptation M&E system**, to inform adaptation progress (NAPs, SDGs, NDCs, etc.) ;
5. **Develop a geodatabase collaborative platform** for mapping existing adaptation metrics worldwide ;
6. **Develop capacity building materials** for practitioners ;
7. **Create interconnections** between research centres and practitioners ;
8. Others (please suggest during discussion)



International
Platform on
Adaptation
Metrics



IPAM Agriculture Committee

Objective of the Agriculture Committee

Develop pragmatic, **comparable, standardized and cost-efficient metrics and methodologies** to track performance of adaptation projects in their human, agri-environmental, and financial dimensions, in order to help :

- Estimate the technology and knowledge gap ;
- Estimate the finance gap (by governments, donors, banks, development agencies and private sector) ;
- Allocate resources, and to record how projects are converted into outcomes and impacts to better adapt to climate change, in the framework of countries' agriculture strategies, NDCs and NAPs.

IPAM Agriculture Committee : Some ideas

- ✓ **Map** existing practices / users / needs for measuring **agriculture** adaptation
- ✓ **Evaluation** of the usability of metrics and frameworks for adaptation measurement
- ✓ **Co-creation** / conception of a coherent and aggregable set of metrics
 - Mapping and evaluation frameworks
 - Adaptation metrics
- ✓ **Pilot** ideas and concepts of adaptation metrics
- ✓ **Share** of experiences of research and practice

IPAM Agriculture Committee activities

■ Modes of collaboration:

- ✓ Advising on IPAM Agriculture work and plans.
- ✓ Supporting the coordination of the Committee.
- ✓ Collaborating and producing work and conceiving ideas.
- ✓ Participating in outreach activities and engaging with stakeholders.
- ✓ Sharing information and networking.
- ✓ Others?

■ Activities:

- ✓ Committee meetings and topic-specific seminars
- ✓ Projects/initiatives: design, resource, work together
- ✓ Outwards facing engagements
 - To help others know IPAM or to disseminate IPAM's work
 - To raise awareness on the challenges of building and using metrics for agriculture
 - Training/meeting user communities, etc.
- ✓ Interacting through information sharing platforms

Agriculture committee first work meeting

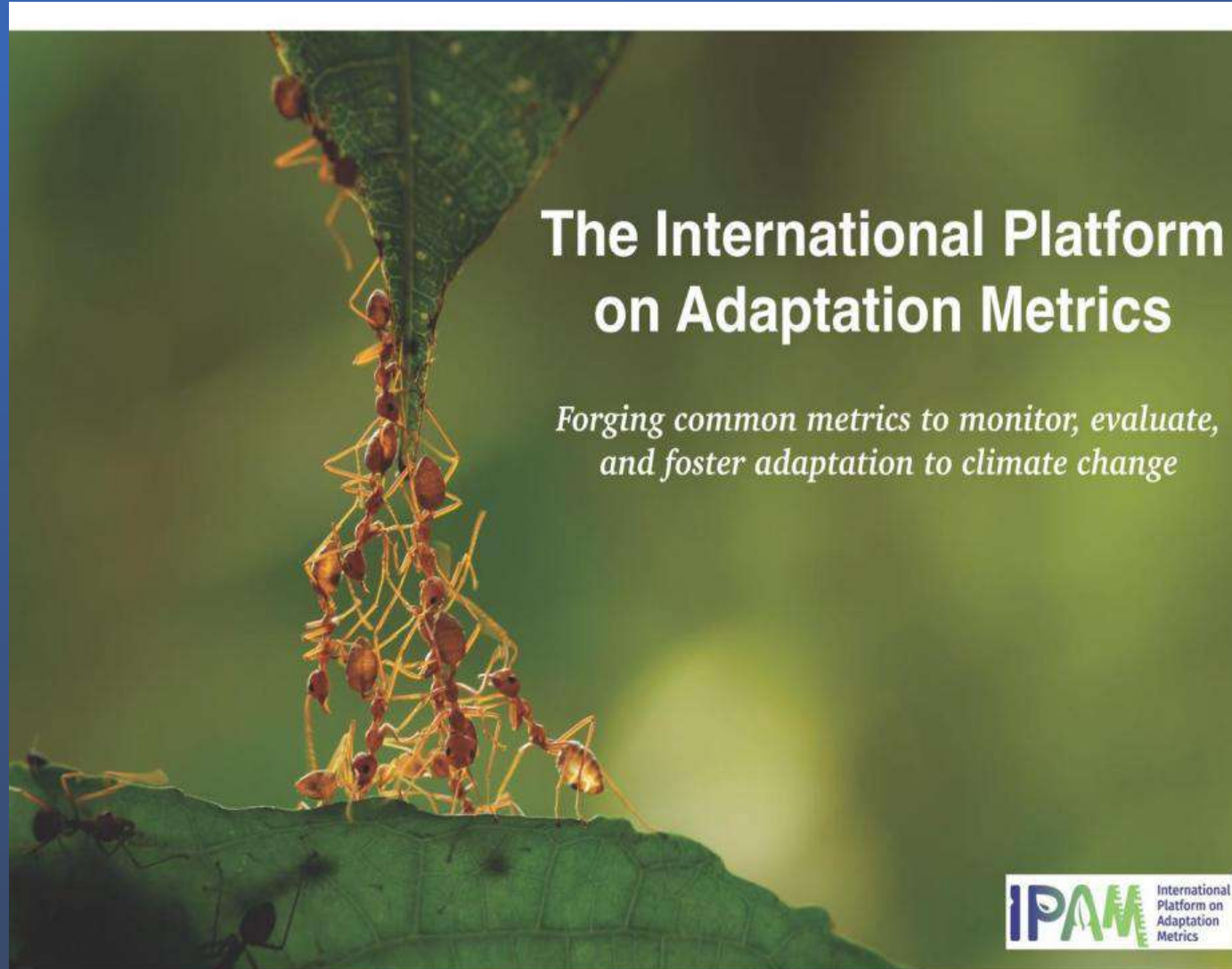
- Scheduled in May
- Collect feedback / ideas on:
 - ✓ Agriculture Committee purpose and plans
 - ✓ Governance and working groups
 - Meeting frequency/themes
 - *Committee “meeting” versus Showcasing/Work Collaboration*
 - Composition and specific sub-group activities
 - Platform for communications and networking
- Start working on a collective positioning paper

POLL 2 (single choice)

Would you be interested to contribute to IPAM Agriculture / AMME development :

1. Yes, I would like to be an associate member and part of the agriculture committee
2. Yes, I am interested to be kept informed about progress and invited to specific discussions
3. I'm solely interested in sharing data, documents and any kind of resources through IPAM
4. I'm specifically interested in contributing to AMME
5. No, thank you

5. Next Steps



Ongoing activities within IPAM Steering Committee

- Recruitment of members and supporters
- Development of the AMME work program for agriculture
- Participation in diverse initiatives (R2R, ARA, ..)
- Organisation / contribution to events related to adaptation metrics (Adaptation Futures, COP26, WASP...)

Next meetings for IPAM members

1. **AMME** work program feedback *(mid-late May)*
2. **IPAM** committee first work meetings *(Late April or May)*

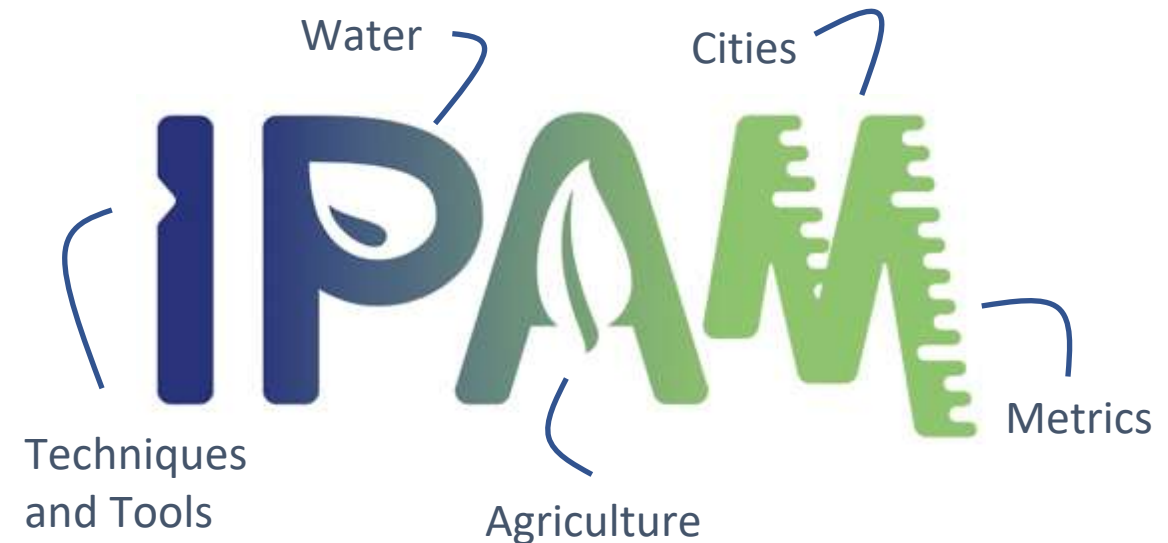


Join IPAM and its committees to participate

Membership is required to participate in committees and access information platform

- **Institutional Members** (voting members in Steering Committee, [contact us](#)).
- **Associate Members** (to be associated as an individual, and involved in topic-oriented committees, [sign a charter](#)).
- **Sponsors** (don't need but can be involved in committees or events, [contact us](#)).
- Anyone interested can sign up to the **mailing list**

CONTACT: ipam@aaainitiative.org



MORE INFO: <http://www.adaptationmetrics.org/join-ipam>

POLL 3 (single choice)

Would you be interested in taking up a leading role in IPAM Agriculture Committee?

- 1. Yes, I could co-chair the committee and conceive and organize sessions**
- 2. Yes, I would be interested in leading a working group (to be proposed in final discussion)**
- 3. No, thank you**

Discussion

Q&As

Please, raise your hand.

IPAM International Platform on Adaptation Metrics

Secretariat : ipam@aaainitiative.org
Techniques and Tools : ipamtools@aaainitiative.org
Water : ipamwater@aaainitiative.org
Agriculture : ipamagriculture@aaainitiative.org
Cities : ipamcities@aaainitiative.org

Thank you very much for your participation